

C.ONLINE



# übersicht arbeitsplatten

**HPL**

## inhalt

- ▶ Uni
- ▶ Fantasie
- ▶ Steinreproduktion
- ▶ Holzreproduktion
- ▶ Brilliantglanz
- ▶ Digitaldruck
- ▶ Design-Rückwand





zur Übersicht

C.ONLINE

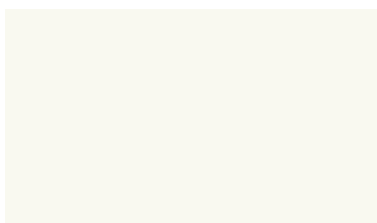
# übersicht arbeitsplatten

HPL

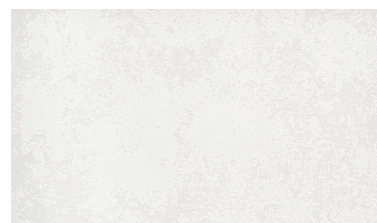
uni



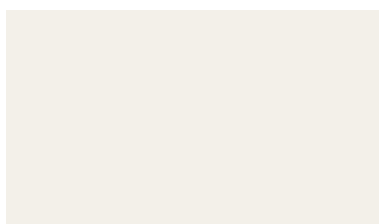
A 1 Cera



A 222 Colin



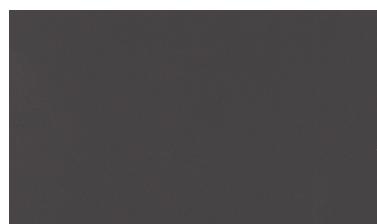
A 237 Cera



A 242 Colin



A 402 Colin



A 41 Pergament



A 623 Colin



P 699 Colin



zur Übersicht

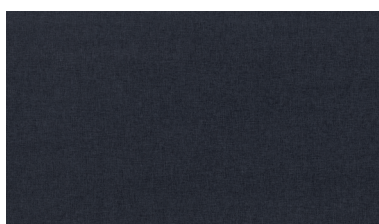
C.O.NLINE

# übersicht arbeitsplatten

HPL

fantasie

1/2



L 115 Tessuto



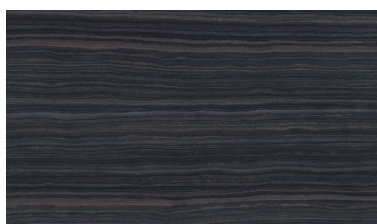
L 245 Tessuto



L 441 Tessuto



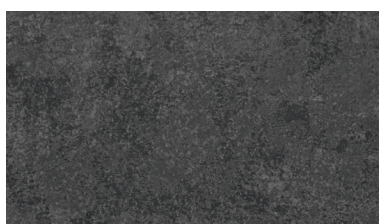
L 750 Tessuto



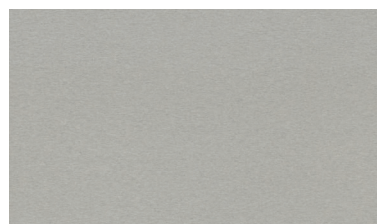
LA 174 Sentira



LA 437 Sentira



ME 477 Cera



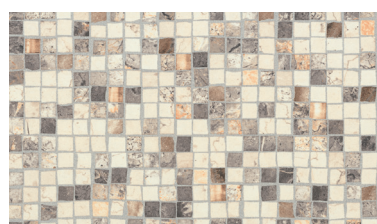
ME 478 Feinschliff



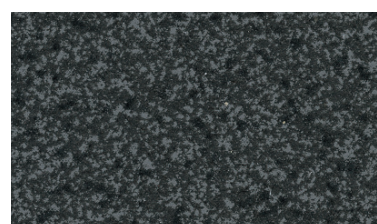
ME 589 Cera



ME 873 Cera



MS 234 Crystal



RS 431 Colin



zur Übersicht

C.ONLINE

# übersicht arbeitsplatten

HPL

fantasie

2/2



S 210 Colin



S 414 Colin



zur Übersicht

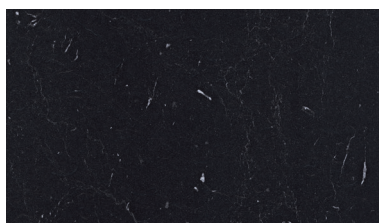
C.ONLINE

# übersicht arbeitsplatten

HPL

steinreproduktion

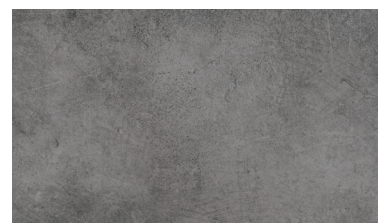
1/5



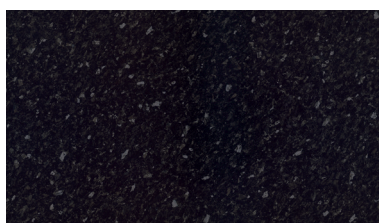
BN 112 Sentira



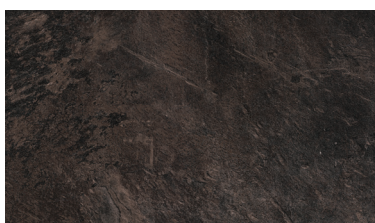
BN 230 Sentira



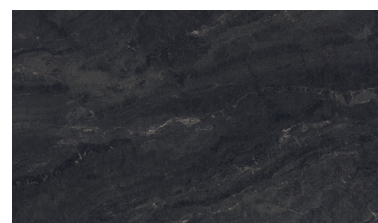
BN 441 Sentira



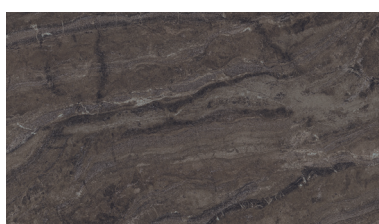
BT 144 Colin



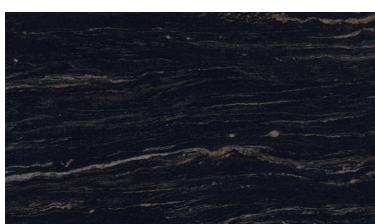
BT 750 Scivaro



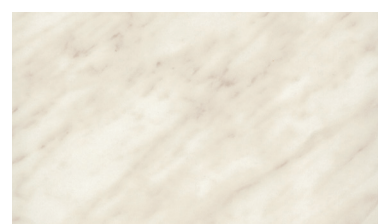
BZ 173 Sentira



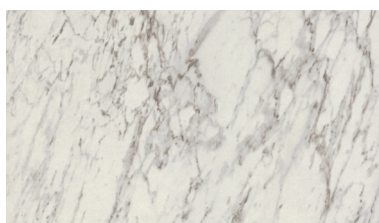
BZ 715 Sentira



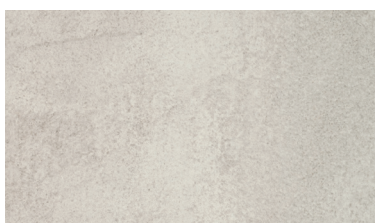
C 172 Sentira



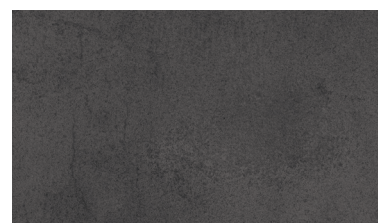
C 220 Colin



C 242 Scivaro



FC 320 Piatta



FC 410 Piatta



zur Übersicht

C.ONLINE

# übersicht arbeitsplatten

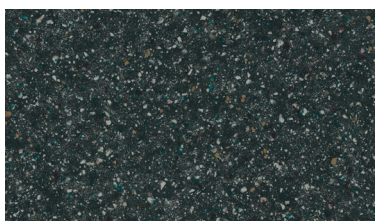
HPL

steinreproduktion

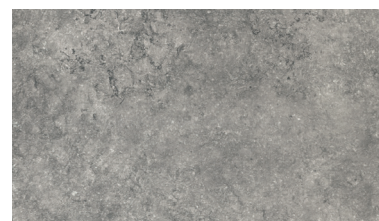
2/5



FC 440 Piatta



FM 137 Feinbütten



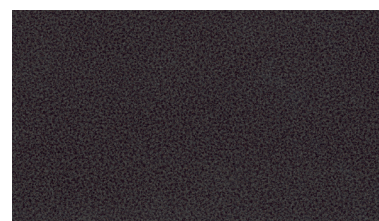
FR 418 Colin



FS 475 Cera



FS 760 Cera



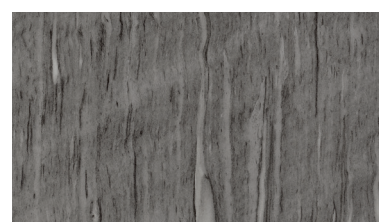
GN 113 Colin



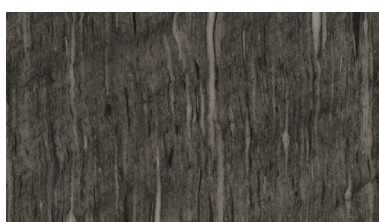
GN 244 Pergament



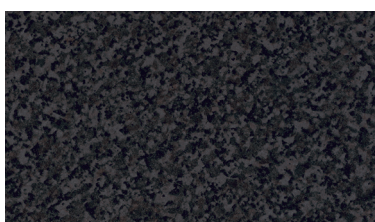
GN 377 Pergament



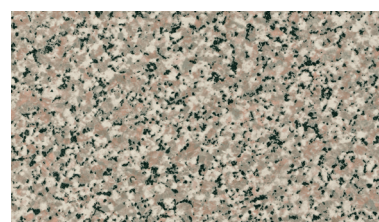
GRS 442 Sentira



GRS 741 Sentira



GT 117 Colin



GT 217 Colin



zur Übersicht

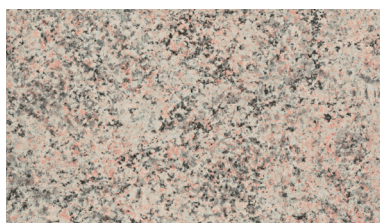
C.ONLINE

# übersicht arbeitsplatten

HPL

steinreproduktion

3/5



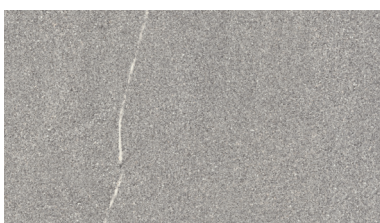
H 272 Colin



H 317 Cera



H 437 Cera



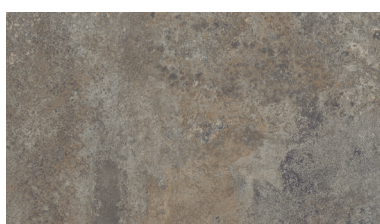
H 442 Crystal



JK 372 Cera



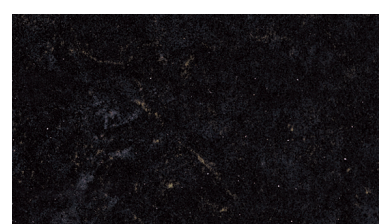
JK 583 Cera



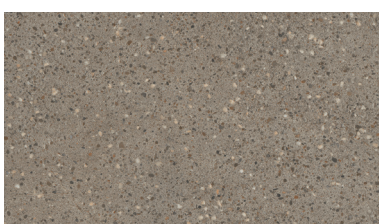
JK 749 Cera



KAS 430 Piatta



KP 116 Colin



KS 773 Pergament



M 372 Sentira



zur Übersicht

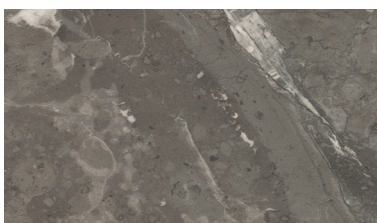
C.ONLINE

# übersicht arbeitsplatten

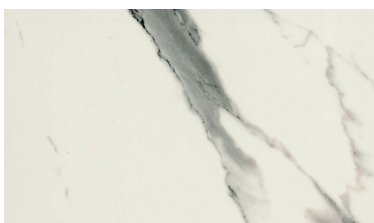
HPL

steinreproduktion

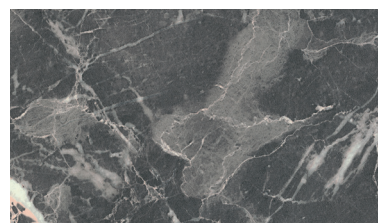
4/5



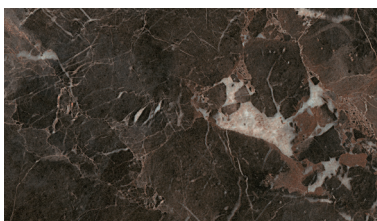
MA 740 Piatta



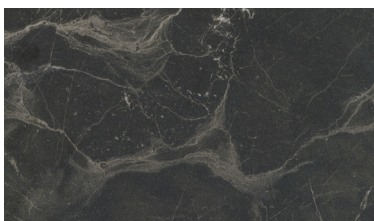
MAA 210 Sentira



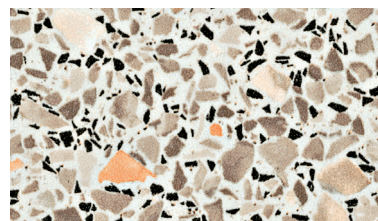
MAI 425 Piatta



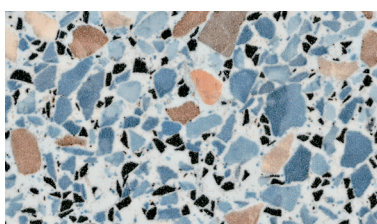
MAI 712 Piatta



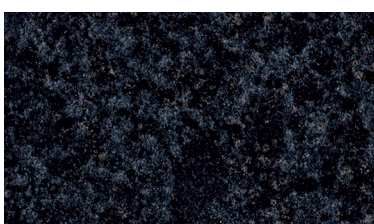
MAV 512 Sentira



MK 432 Colin



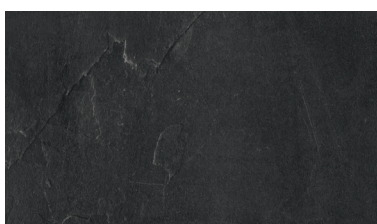
MK 835 Colin



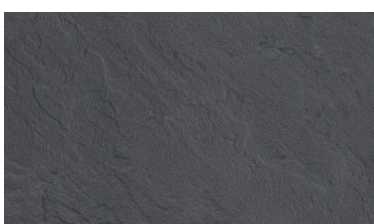
RE 128 Colin



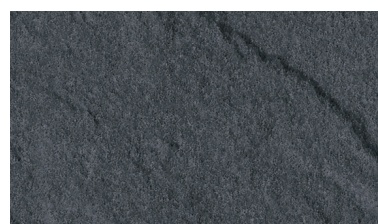
S 347 Cera



SC 114 Piatta



SC 134 Pergament



SC 475 Pergament





zur Übersicht

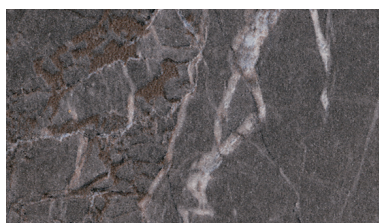
C.ONLINE

# übersicht arbeitsplatten

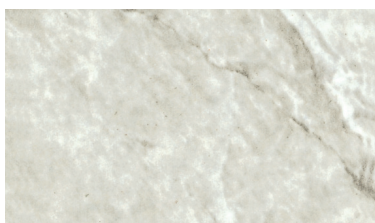
HPL

steinreproduktion

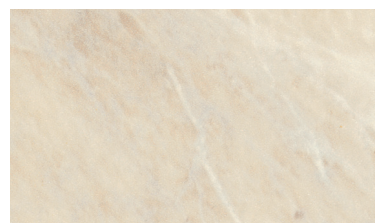
5/5



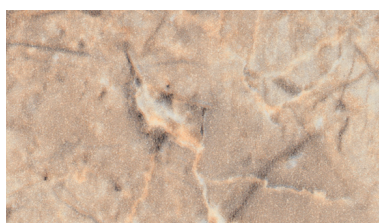
SL 120 Scivaro



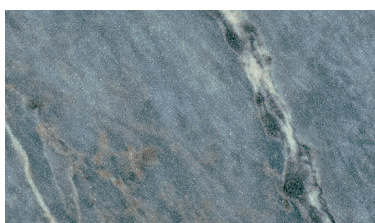
SL 225 Colin



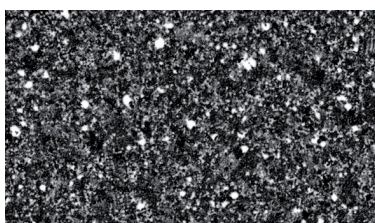
SL 239 Colin



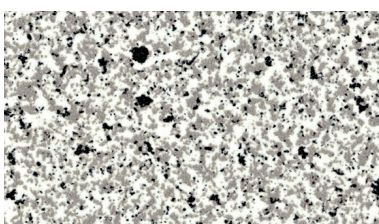
SL 335 Scivaro



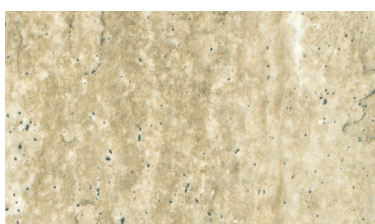
SL 843 Colin



ST 12 Colin



ST 21 Colin



TV 374 Colin



zur Übersicht

C.ONLINE

# übersicht arbeitsplatten

HPL

holzreproduktion

1/5



AE 761 Innato



AH 733 PORE F



AV 370 Sentira



BB 234 PORE F



BB 339 PORE F



BBL 242 PORE F



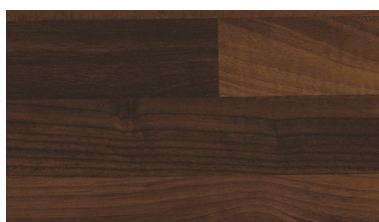
BBL 329 PORE F



BBL 355 PORE F



BBL 467 PORE F



BBL 714 PORE F



BBL 739 PORE F



zur Übersicht

C.ONLINE

# übersicht arbeitsplatten

HPL

holzreproduktion

2/5



BU 36 PORE F



BU 37 PORE F



BU 370 Sentira



BU 95 PORE F



CB 237 PORE F



EB 308 PORE D



EI 357 Sentira



EI 370 Sentira



EI 396 PORE F



EI 740 Sentira



EI 761 PORE F



EIL 320 Sentira



zur Übersicht

C.ONLINE

# übersicht arbeitsplatten

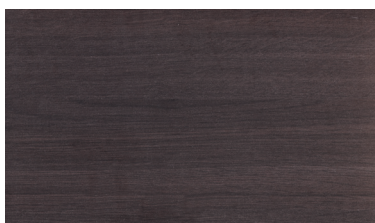
HPL

holzreproduktion

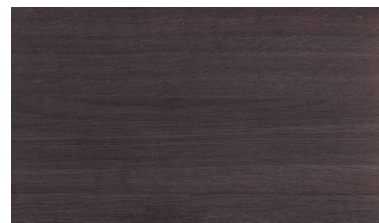
3/5



EIL 730 Sentira



EIP 791 PORE F



EIR 713 Innato



EIV 227 Legnato



EIV 341 Legnato



EIV 971 Legnato



ES 295 PORE F



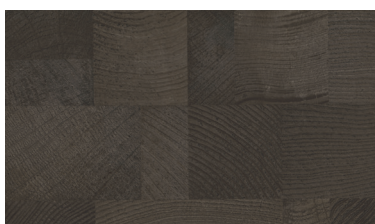
ES 725 PORE F



ES 781 PORE F



HA 26 PORE F



HZ 710 Sentira



KA 771 PORE F



zur Übersicht

C.ONLINE

# übersicht arbeitsplatten

HPL

holzreproduktion

4/5



KBV 932 Sentira



KIP 661 Innato



KIR 967 Innato



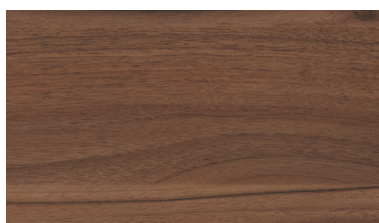
MEI 170 Innato



MW 340 Sentira



MW 790 Sentira



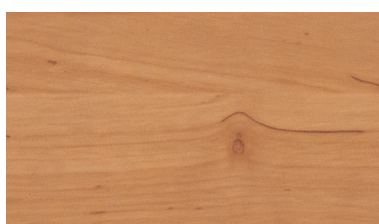
NU 725 PORE F



NU 742 PORE F



PI 773 PORE F



RT 73 PORE F



SES 373 Sentira



SES 761 Sentira



zur Übersicht

C.ONLINE

# übersicht arbeitsplatten

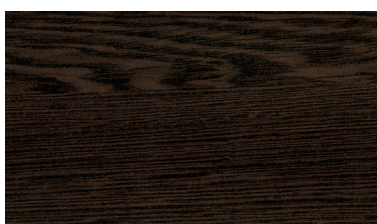
HPL

holzreproduktion

5/5



T 432 PORE F



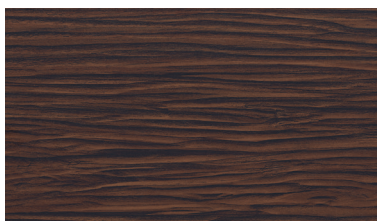
WE 716 PORE F



WS 372 Feinbütten



WS 673 Feinbütten



ZO 715 PORE F



zur Übersicht

C.ONLINE

# übersicht arbeitsplatten

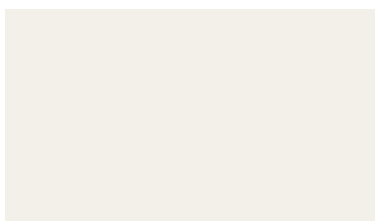
HPL

brillantglanz

1/2



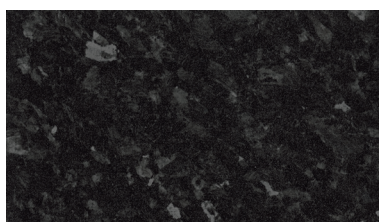
A1 Brillant Glanz



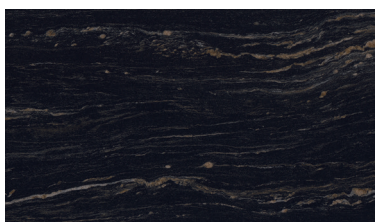
A 242 Brillant Glanz



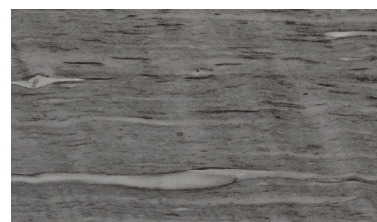
A 505 Brillant Glanz



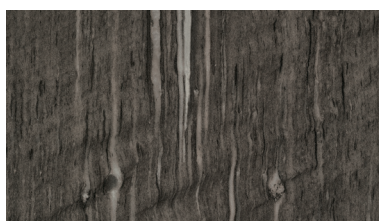
BT 144 Brillant Glanz



C 172 Brillant Glanz



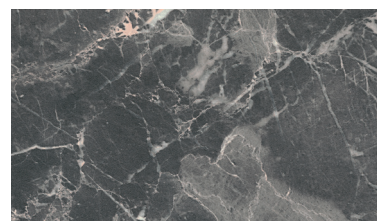
GRS 442 Brillant Glanz



GRS 741 Brillant Glanz



MAA 210 Brillant Glanz



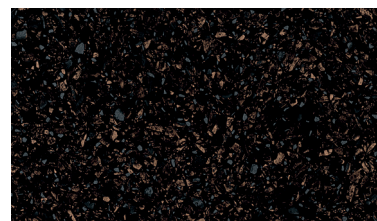
MAI 425 Brillant Glanz



MAI 712 Brillant Glanz



MAV 512 Brillant Glanz



MK 194 Brillant Glanz



zur Übersicht

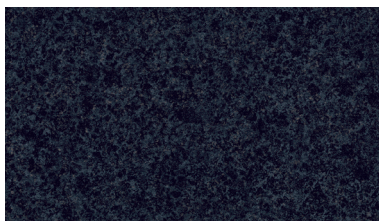
C.ONLINE

# übersicht arbeitsplatten

HPL

brillantglanz

2/2



RE 128 Brillant Glanz



S 347 Brillant Glanz





zur Übersicht

C.ONLINE

# übersicht arbeitsplatten

HPL

digitaldruck



BU 392 PORE F



D 2106 PORE D



D 2201 Crystal



FI 420 PORE F



PAL 187 PORE F



TL 558 Feinbütten



zur Übersicht

C.ONLINE

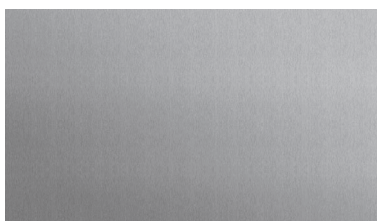
# übersicht arbeitsplatten

HPL

design-rückwand



ALU 273 gebürstet



ALU 423 gebürstet



D 2101 Brillant Glanz



D 3120 Brillant Glanz